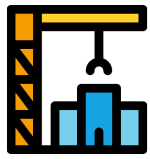


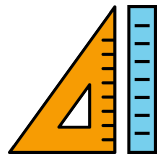


# BY THE NUMBERS:

CHECK OUT WHAT WE'VE ACCOMPLISHED\*



**20+**  
real estate  
projects



**1.7 MILLION**  
square feet of commercial, industrial,  
housing and recreational space



INVESTED  
**\$713 MILLION**  
in developing infrastructure projects



Net  
economic  
impact of  
investments =

**\$1.5 BILLION**



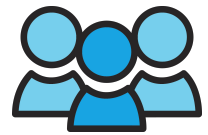
**87%**

increase in residents with  
bachelor's degree or higher\*\*

Residents with graduate or pro-  
fessional degree or  
higher increased by **134%\*\***

**7,800**

jobs resulting in over



**\$600  
MILLION**

in earnings



Loaned or granted

**\$19  
MILLION**  
to **16,999**

minority-owned small businesses



Median household  
income  
increased by **48%\*\***



Housing values  
increased by **27%\*\***



Number of people below poverty  
line declined by **21%**

Unemployment  
declined by **7.8%**



**300**

new single-  
and multi-  
family  
affordable units



# BY THE NUMBERS:

CHECK OUT WHAT WE'VE ACCOMPLISHED

## INCREASED ACCESS TO: TIMELINE:



### RETAILERS

Walmart, Ross Dress for Less, Dollar Tree, Beauty Trendz



### RESTAURANTS

Culvers, Potbelly's, Wingstop, Lexington Betty's Smokehouse, Chick-fil-A



### GROCERY STORES

Walmart, Mariano's



### HEALTH FACILITIES

Blue Door Neighborhood Center, Walmart Pharmacy, Advocate Urgent Care, Lawndale Medical Corridor



### RECREATION

Pullman Community Center, Pullman National Historical Park, Planet Fitness, North Austin Community Center



### HOUSING

Artspace Lofts, Reclaiming Chicago

**HIRED**



### EMPLOYMENT

All retailers, restaurants, manufacturers and distribution centers that CNI brought in provide jobs to the community



### CAPITAL

for minority-owned businesses through Greenwood Archer Capital

**2010**

Chicago Neighborhood Initiatives (CNI) created

**2011**

Closed \$50MM in CNI's NMTC allocation to 4 projects throughout Chicago, including Salvation Army Kroc Center and Noble Charter Schools.

**2012**

Formed Greenwood Archer Capital – CNI's small business lending CDFI.

**2014**

Opened Pullman Park anchored by a Walmart and other retailers such as Ross Dress for Less, Advocate Urgent Care Clinic and Planet Fitness.

**2014**

Method Home Products opened first ever U.S. production facility and New York-based Gotham Greens built the nation's largest commercial rooftop greenhouse atop the Method facility.

**2015**

President Barack Obama signed the Executive Order creating Chicago's only National Park Service site.

**2016**

Opened Mariano's in Bronzeville.

**2017**

Opened 111<sup>th</sup> Street Gateway with Potbelly's as its anchor tenant.

**2017**

Closed \$30MM in CNI's NMTC allocation to 4 projects throughout Chicago, including UChicago Trauma Center and Ogden Medical Corridor.

**2018**

Opened the Pullman Community Center – a 135,000 sf sports and educational facility.

**2018**

Whole Foods built a 150,000 square foot Midwest Distribution Center.

**2019**

Gotham Greens opened a 105,000 sf free-standing, state-of-the-art greenhouse and distribution center.

**2019**

Opening of the 111<sup>th</sup> Street Food Hall – later to become Lexington Betty Smokehouse.

**2020**

Opened Amazon Last Mile Distribution Center in Pullman, delivering 200 new quality jobs. The Center was sold to Opportunity Zone investors for \$65.1MM.

**2021**

Method, now a subsidiary of SC Johnson, added a 400,000 sf distribution center.

**2021**

Artspace Lofts opened, Pullman's first residential development in 60 years.

**2021**

Pullman Culvers opens as the first stand-alone, sit-down restaurant.

**2021**

Opening of Pullman National Park, for which CNI served as campus site developer.

**2023**

Opening of the North Austin Community Center – a 152,000 sf, state-of-the-art recreational and educational facility and 10-acre campus.

**2024**

CNI's Structured Finance Consulting practice officially formed, closing Comer Xchange and Fillmore Linen NMTC financings.

**2024**

First Reclaiming Chicago (RC) homes sold as RC Fund hits \$20MM in capital raised by CNI and RC partners.

**2025**

Opened Pullman Gateway with Chick-fil-A as the anchor tenant.